

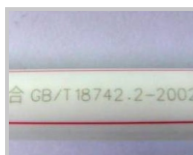
MC30-E-A/60-E-A/100-E-A CO₂ Laser Marking Machine



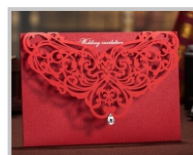
Wood products marking



Leather engraving



PC pipe marking



Greeting card engraving



USB data line connector marking

Features

1. Adopts RF CO₂ laser generator with good quality laser beam, uniform laser power density and stable laser power output which can meet the demand of most industry application in market.
2. Digital high speed scanning galvanometer: fast speed, stable quality.
3. Core Controller with completed function and software The powerful control system can optimize data according to different technology, support multiple languages and layers management.

Specification

Wavelength	10.6μm (can choose 9.3μm)	Graphic Format Supported	AI,DXF,BMP,JPGE,PLT etc.
Spot	<1.2m ²	Voltage	AC220V±10%
Laser Power	30W60W	Frequency	50/60Hz
Impulse Frequency	0~25KHz	Machine dimension	1300X1100X1400mm/2100X1800X1400mm
Cooling type	Air-cooling / Water-cooling	Machine weight	About 141kg / About 146kg/ About 170kg
Marking area	110X110mm/175X175mm/300X300mm	Work Environment	Temp : 10~35°C , Humidity : 5~85% , Clean or less dust
Minimum Line Width	0.1mm	Gross power	<1.75KW<2.05KW
Minimum Character	1.5mm	Laser Safety Level	4
Speed	0~5000mm/s (imported galvanometer 0~7000mm/s)		

Material

Wood, plastic and paper.