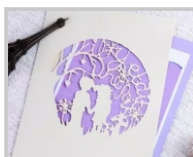
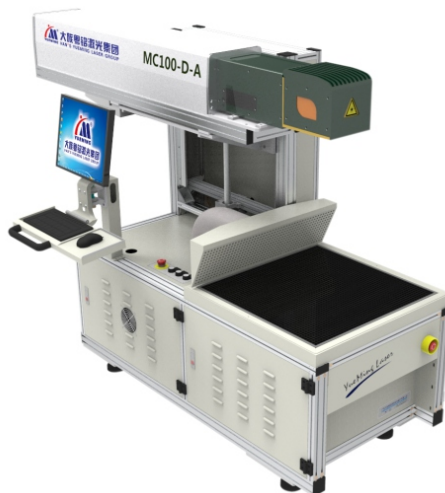


## MC100-D-A Laser Marking Machine



Greeting card engraving



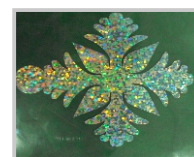
Wooden box engraving



Leather marking



Keyboard marking



Denim carving

### Features

1. High reliability, long working hours, clear and fine marking result, and multi-functional software can produce various marking designs.
2. Non-contact processing method ensures maximum accuracy.
3. Suitable for marking on various materials, easy to install and maintenance free.
4. Customized machine is available for different application.

### Specification

Laser power	100W	Cooling method	Air/Water
Wavelength	10.64μm	Weight	150kg
Work area	600mm X600mm	Overall dimension	1080mmX530mmX1335mm
Voltage	AC220V±10%	Working environment	Clean, less dust
Marking speed	0~7000mm/s		Temp:10~ 30°C , Humidity:5~85%

### Material

Wood products, paper, leather, garment, plexiglass, epoxy, acrylic, unsaturated polyester, resin and other non-metallic materials.