

CMA1200-H Sliding Table Laser Cutting Machine



Fabric cutting



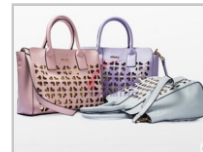
Leather fabrics laser cutting



Plush fabric cutting



Towel laser cutting



Leather hollowing

Features

1. Double working tables, auto exchanging table from left to right, cutting and loading material can be done in the same time.
2. Work efficiency increases 100%, 10% material consumption decrease and no abrasion on the base board.
3. Fast continuous curve cutting, the highest curve cutting speed: 30 m/ min.
4. Laser power and cutting speed automatic matching function to ensure good corner cutting result.
5. USB2.0 high-speed port.
6. Full opto-coupler isolation system with high-speed differential input and output circuit design, the signal is not distorted in long-distance transmission, strong anti-jamming capability, the system achieves 12 output and 16 input status with user friendly interface.
7. 128 files can be saved for the off-line computer work, which is proper for large quantity and repeat processing.
8. Save the labor cost: one worker can operate more than 10 units after training.

Specification

Power	80W/100W/130W	Cooling method	Water
Wavelength	10.64μm	Weight	374kg
Work Area	1200mm×600mm	Overall dimension	4500mm×1160mm×1170mm
Supply Voltage	AC220V±10%	Work environment	Clean, less dust
Speed	0-20m/min		Temp: 5~40°C, Humidity: 5~80%

Material

Wood, paper, leather, textile, acrylic, epoxy resin, wool, plastic, bamboo and non metal.